

PRES'19 is the 22nd conference initiated in collaboration with the late Prof Zdeněk Burianec in the framework of CHISA congresses

Year	Place	Year	Place
1998	Prague, CZ	2009	Rome, IT
1999	Budapest, HU	2010	Prague, CZ
2000	Prague, CZ	2011	Florence, IT
2001	Florence, IT	2012	Prague, CZ
2002	Prague, CZ	2013	Rhodes, GR
2003	Hamilton, CA	2014	Prague, CZ
2004	Prague, CZ	2015	Kuching, MY
2005	G. Naxos, IT	2016	Prague, CZ
2006	Prague, CZ	2017	Tianjin, CN
2007	Ischia, IT	2018	Prague, CZ
2008	Prague, CZ	2019	Crete, GR

FEES AND REGISTRATION

Registration covers the presentation of max 2 papers, of which 1 oral and 1 CET paper. Second and further CET papers, as well as poor CET manuscript quality incur additional costs. See pres19.cperi.certh.gr for further details and updates.

BEST POSTER & SPIL YOUNG SPEAKERS AWARDS

PRES has a long tradition of promoting excellence in poster presentations. In 2018, a new SPIL Young Speakers Award, sponsored by **SPIL Project** at Brno Univ. Tech., CZ, was added. Awards include certificates, Sustainability and Process Integration books, and invitations to submit to a Special Issue.

VENUE AND TRANSPORTATION

Crete is the largest Greek island with excellent Mediterranean climate and diverse landscape. High mountains, exotic beaches, breath-taking scenery. Well known for its hospitable people, exquisite cuisine based on authentic ingredients and unique way of living. World civilization thrived in Crete for more than 5 millennia.

Crete is served by two international airports at Heraklion (HER) and Chania (CHQ). Frequent ferry service is available from Piraeus-Athens port.

ACCOMMODATION

Accommodation at the conference and nearby hotels will be offered as options by the organisers with full details announced in February 2019.

VISA INFORMATION

When making visa arrangements, please ensure that you have the conference paper accepted and duly registered. After this, please contact the PRES organisers at pres19.cperi.certh.gr.

CALL FOR PAPERS 22nd Conference Process Integration, Modelling and Optimisation for Energy Saving and Pollution Reduction

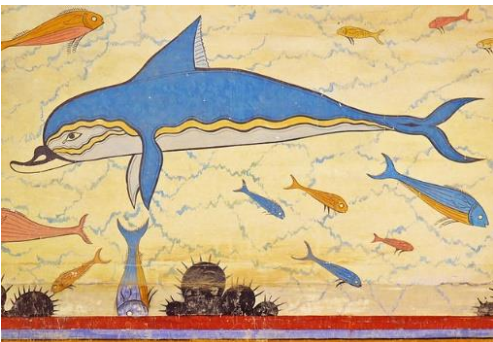
PRES'19

20-23 October 2019
Crete, Greece



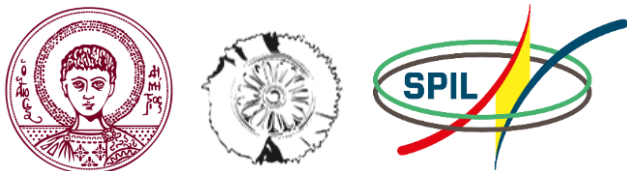
AIM

The aim of the PRES conferences is to review the latest development and applications of Process Integration for energy conservation, pollution reduction and related topics. Industrial experience is especially welcome.



conferencepres.com
pres19.cperi.certh.gr





INTERNATIONAL SCIENTIFIC COMMITTEE

PRES President

J. J. Klemeš (CZ)

PRES'19 Chairs

P. Seferlis (GR); S. Voutetakis (GR),
T.G. Walmsley (CZ); P.S. Varbanov (CZ)

PRES_chair@fme.vutbr.cz

Vice-Presidents

J. Drahoš (CZ); F. Friedler (HU); H. L. Lam (MY);
D-F. Li (CN); S-Y. Li (CN); Z-Y. Liu (CN); S. Pierucci
(IT); P. Seferlis (GR); P. Stehlík (CZ); S. Wan Alwi
(MY); X-G. Yuan (CN)

Scientific Secretaries

Y.V. Fan, X.X. Jia, X.C. Wang, SPIL, NETME Centre,
Brno University of Technology, CZ

Organising Committee Contact Email:

PRES19@cperi.certh.gr

PRES_secretary@fme.vutbr.cz

Members

M. Atkins, NZ; K. Aviso, PH; S. Bandyopadhyay, IN;
M. Bakošová, SK; J. Bonet Ruiz, ES; C. Bouallou, FR;
C-L. Chen, TW; C. de Almeida, BR; N. Duić, HR; M. Emtir,
LY; X. Feng, CN; D.C.Y. Foo, MY; A. Friedl, AT;
T. Gundersen, NO; M. Gough, UK; S. Harvey, SE; A.
Hoadley, AU; A. Josceanu, RO; V. Kafarov, CO; P.
Kapustenko, UA; E. Kenig, DE; J Kim, KR; Z. Kravanja, SI;
D. Kukulka, US; J. Labidi, ES; V. Lavric, RO; C. T. Lee, MY;
P. Liu, CN; X. Liu, CN; H. Lund, DK; Z. Manan, MY; F.
Manenti, IT; F. Marechal, CH; K. Matsuda, JP; A. Mészáros,
SK; D. Misirlis, GR; I.M. Mujtaba, UK; A. Nemet, SI; S.
Nižetić, HR; Z. Novak Pintarič, SI; N. Ozalp, US; A.I.
Papadopoulos, GR; S. Perry, UK; M. Picón-Núñez, MX; A.
Pleșu Bonet-Ruiz, ES; Y. Qian, CN; A. Reverberi, IT;
L. Savulescu, CA; M.A. Sadenova, KZ; S. K. Sikdar, US;
R. Smith, UK; R.G. Tan, PH; K. Urbaniec, PL;
M.R.W. Walmsley, NZ; Q. Wang, CN; Y. Wang, CN; J. Yan,
SE; F. You, US; S. Bt Yusuf, MY.

TOPICS

- a) Heat Integration and energy saving
- b) Total Site Integration
- c) Industrial process retrofit and improvement
- d) Renewable energy and utility systems
- e) Process simulation
- f) Systems and product synthesis
- g) Mathematical optimisation
- h) Process analysis and modelling
- i) Heat exchangers and heat transfer
- j) Cleaner production and emissions control
- k) Footprint minimisation and mitigation
- l) Power systems design and optimisation
- m) Sustainable energy planning
- n) Operations and supply chain management
- o) Waste and wastewater management
- p) Waste-to-energy
- q) Process dynamics and control
- r) Reactor and catalyst engineering
- s) Fluid dynamics
- t) Knowledge transfer

SPECIAL SESSIONS

- u) SPIL Symposium
- v) Batch integration and scheduling
- w) Sustainable mobility
- x) CO₂ capture and utilisation

** More Special Sessions are encouraged **

IMPORTANT DATES

30 November 2018, Abstract due

31 January 2019, Notification of abstract
acceptance

16 March 2019, Full text submission due

30 April 2019, Full text revisions and final
acceptance completed



ABSTRACTS SUBMISSION

Authors who wish to present a contribution are asked
to prepare a one-page abstract and submit via:
<pres19.cperi.certh.gr>

PRESENTATION FORMATS

Invited plenary lectures. Submitted papers will be
considered for Keynote/oral/poster presentations.

CHEMICAL ENGINEERING TRANSACTIONS

Peer-reviewed accepted 6-page papers may have the
option to be published in Chemical Engineering
Transactions (CET), www.cetjournal.com (indexed
by SCOPUS and Google Scholar).

SPECIAL ISSUE PUBLICATIONS

Selected papers will be extended and published in
special issues of four leading journals:

- **Renewable and Sustainable Energy Reviews**,
IF=9.184, EiC: A. M. Foley.
- **Journal of Cleaner Production**, **IF=5.651**, Co-
EiC: J.J. Klemeš, C. de Almeida, Y. Wang.
- **Energy**, **IF=4.968**, EiC: H. Lund.

